

TECHNICAL MANUAL

DIRECT SUPPORT MAINTENANCE

REPAIR PARTS AND SPECIAL TOOLS LISTS

FOR

INVERTER, STATIC, POWER

PP-7274C/A

(NSN 6125-00-148-8342)

By Order of the Secretary of the Army:

Official:

ROBERT M. JOYCE
Brigadier General, United States Army
The Adjutant General

E. C. MEYER
General, United States Army
Chief of Staff

Distribution:

To be distributed in accordance with DA Form 12-31, Direct and General Support Maintenance Requirements for AH-1S Aircraft.

TECHNICAL MANUAL }
 No. 11-6125-259-30P }

HEADQUARTERS
 DEPARTMENT OF THE ARMY
 WASHINGTON, DC, 7 May 1982

DIRECT SUPPORT MAINTENANCE
 REPAIR PARTS AND SPECIAL TOOLS LISTS
 FOR
 INVERTER, STATIC, POWER PP-7274C/A
 (NSN 6125-00-148-8342)

CURRENT AS OF 7 JANUARY 1962

REPORTING ERRORS AND RECOMMENDING IMPROVEMENTS
 You can help improve this manual. If you find any mistakes or if you know of a way to improve the procedures, please let us know. Mail your letter, DA Form 2028 (Recommended Changes to Publications and Blank Forms), or DA Form 2028-2 located in the back of this manual direct to Commander, US Army Communications-Electronics Command, ATTN:DRSEL-ME-MQ Fort Monmouth, NJ 07703.
 In either case, a reply will be furnished to you.

Table of Contents

	Page	Illus Figure
SECTION I. Introduction.....	1	
GROUP II. Repair parts lists.....	5	
00 Inverter, Static, Power PP-7274C/A.....	5	1
01 EMI Module A1.....	7	2
02 High Level Boost Module A2.....	9	3
03 Low Level boost Module A3.....	13	4
04 Power Caps and Drive Circuit A4.....	15	5
0401 Component Assembly A4A1.....	17	6
05 Output Filter and Bias Regulator A5.....	19	7
0501 Component Assembly.....	21	8
06 Component Assembly, Logic A6.....	25	9
07 Component Assembly, Boost Regulator A7.....	29	10
SECTION III. Special Tools List (Not applicable)		
IV. National Stock Number and Part Number Index.....	31	

SECTION I
INTRODUCTION

1. Scope

This manual lists spares and repair parts; special tools; special test, measurement, and diagnostic equipment (TMDE), and other special support equipment required for performance of direct support maintenance of the PP-7274C/A. It authorizes the requisitioning and issue of spares and repair parts as indicated by the source and maintenance codes.

2. General

This Repair Parts and Special Tools List is divided into the following sections:

- a. *Section II. Repair Parts List.* A list of spares and repair parts authorized for use in the performance of maintenance. The list also includes parts which must be removed for replacement of the authorized parts. Parts lists are composed of functional groups in numeric sequence, with the parts in each group listed in figure and item number sequence.
- b. *Section III. Special Tools List.* Nonapplicable.
- c. *Section IV. National Stock Number and Part Number Index.* A list, in National item identification number (NIIN) sequence, of all National stock numbers (NSN) appearing in the listings, followed by a list, in alphameric sequence, of all part numbers appearing in the listings. National stock numbers and part numbers are cross-referenced to each illustration figure and item number appearance.

3. Explanation of columns

- a. *Illustration.* This column is divided as follows:
 - (1) *Figure number.* Indicates the figure number of the illustration on which the item is shown.
 - (2) *Item number.* The number used to identify item called out in the illustration.
- b. *Source Maintenance, and Recoverability (SMR) Codes.*
 - (1) *Source code.* Source codes indicate the manner of acquiring support items for maintenance, repair, or overhaul of end items. Source codes are entered in the first and second positions of the Uniform SMR Code format as follows:

<i>Code</i>	<i>Definition</i>
PA-Item procured and stocked for anticipated or known usage.	

<i>Code</i>	<i>Definition</i>
MD-Item to be manufactured or fabricated at the depot maintenance level.	
XA-Item is not procured or stocked because the requirements for the item will result in the replacement of the next higher assembly	
XD-A support item that is not stocked. When required, item will be procured through normal supply channels.	

NOTE

Cannibalization or salvage may be used as a source of supply for any items source coded above except those coded XA and aircraft support items as restricted by AR 700-42.

(2) *Maintenance code.* Maintenance codes are assigned to indicate the levels of maintenance authorized to USE and REPAIR support items. The maintenance codes are entered in the third and fourth positions of the Uniform SMR Code format as follows:

(a) The maintenance code entered in the third position will indicate the lowest maintenance level authorized to remove, replace, and use the support item. The maintenance code entered in the third position will indicate one of the following levels of maintenance:

<i>Code</i>	<i>Application/Explanation</i>
F-Support item is removed, replaced, used at the direct support level.	
(b) The maintenance code entered in the fourth position indicates whether the item is to be repaired and identifies the lowest maintenance level with the capability to perform complete repair (i.e., all authorized maintenance functions). This position will contain one of the following maintenance codes:	
<i>Code</i>	<i>Application/Explanation</i>
F-The lowest maintenance level capable of complete repair of the support item is the direct support level.	
Z-Nonreparable. No repair is authorized.	

(3) *Recoverability code.* Recoverability codes are assigned to support items to indicate the disposition action on unserviceable items. The recoverability code is entered in the fifth position of the Uniform SMR Code format as follows:

Recoverability codes

Definition

Z-Nonreparable item. When unserviceable, condemn and dispose at the level indicated in position 3.

F-Reparable item. When uneconomically reparable, condemn and dispose at the direct support level.

c. National Stock Number. Indicates the National stock number assigned to the item and will be used for requisitioning purposes.

d. Federal Supply Code for Manufacturer (FSCM). The FSCM is a 5-digit numeric code listed in SB 708-41/42 which is used to identify the manufacturer, distributor, or Government agency, etc.

e. Part Number. Indicates the primary number used by the manufacture (individual, company, firm, corporation or Government activity), which controls the design and characteristics of the item by means of its engineering drawings, specifications, standards, and inspection requirements to identify an item or range of items.

NOTE

When a stock numbered item is requisitioned, the repair part received may have a different part number than the part being replaced.

f. Description. Indicates the Federal item name and, if required, a minimum description to identify the item.

g. Unit of Measure (U/M). Indicates the standard of the basic quantity of the listed item as used in performing the actual maintenance function. This measure is expressed by a two-character alphabetical abbreviation (e.g., ea, in, pr, etc). When the unit of measure differs from the unit of issue, the lowest unit of issue that will satisfy the required units of measure will be requisitioned.

h. Quantity Incorporated in Unit. Indicates the quantity of the item used in the breakout shown on the illustration figure, which is prepared for a functional group, subfunctional group, or an assembly.

4. Special Information

a. Detailed manufacturing instructions for items

source coded to be manufactured or fabricated are found in TM 11-6125-259-30.

b. The following publication pertains to the PP-7274C/A and its components:

TM 11-6125-259-30, Inverter, Static, Power PP-7274C/A.

c. National stock numbers (NSN's) that are missing from P source coded items have been applied for and will be added to this TM by future change/revision when they are entered in the Army Master Data File (AMDF). Until the NSN's are established and published submit exception requisitions to: Commander, US Army Communications-Electronics Command, ATTN: DR-SEL-MM, Fort Monmouth, NJ 07703 for the part required to support your equipment.

5. How to Locate Repair Parts

a. When National stock number or part number is unknown.

(1) *First.* Using the table of contents, determine the functional group within which the item belongs. This is necessary since illustrations are prepared for functional groups and listings are divided into the same groups.

(2) *Second.* Find the illustration covering the functional group to which the item belongs.

(3) *Third.* Identify the item on the illustration and note the illustration figure and item number of the item.

(4) *Fourth.* Using the Repair Parts Listing, find the figure and item number noted on the illustration.

b. Where National stock number or part number is known.

(1) *First.* Using the Index of National Stock Numbers and Part Numbers, find the pertinent National stock number or part number. This index is in NIIN sequence followed by a list of part numbers in alphameric sequence, cross-referenced to the illustration figure number and item number.

(2) *Second.* After finding the figure and item number, locate the figure and item number in the repair parts list.

6. Abbreviations

Not applicable.

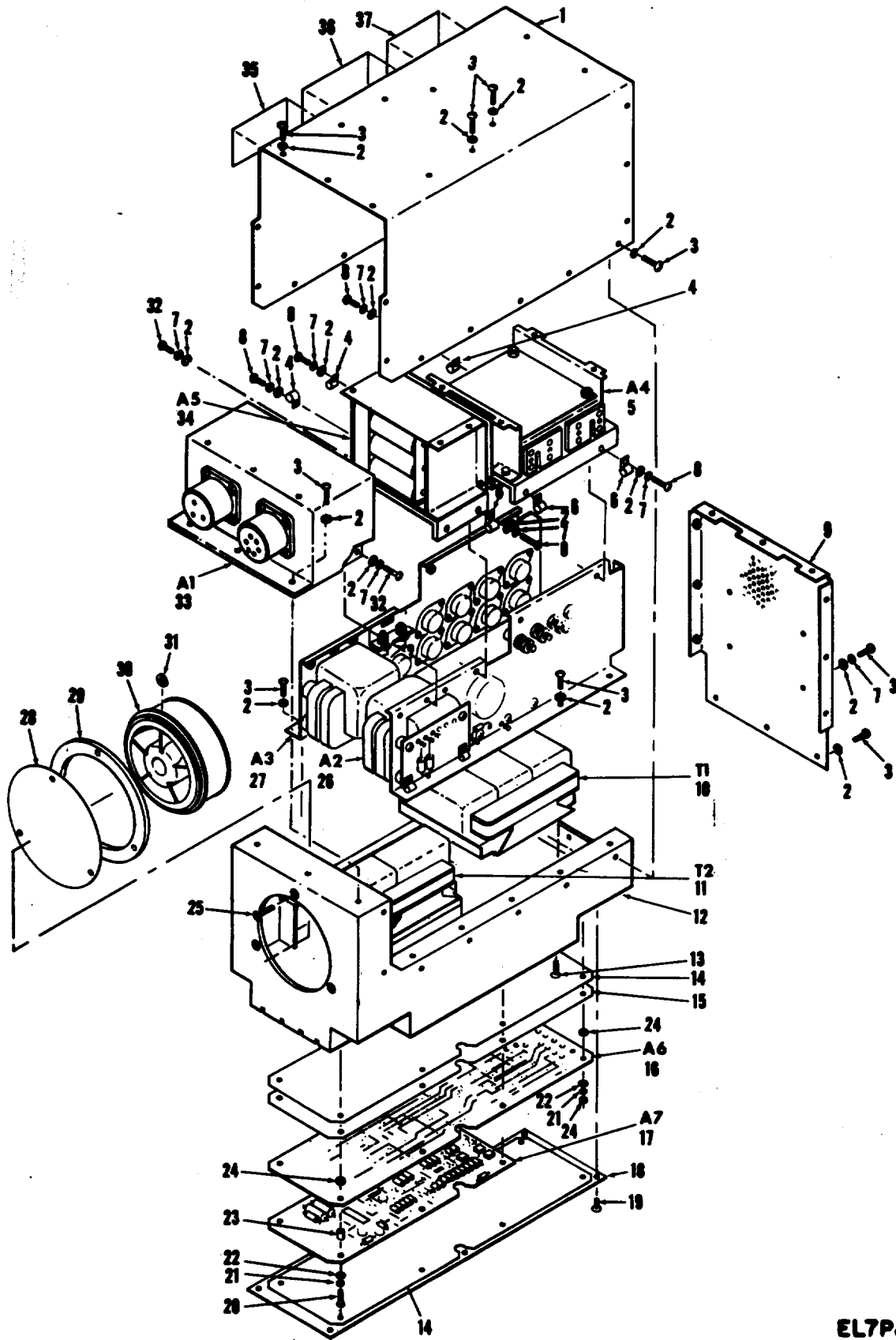
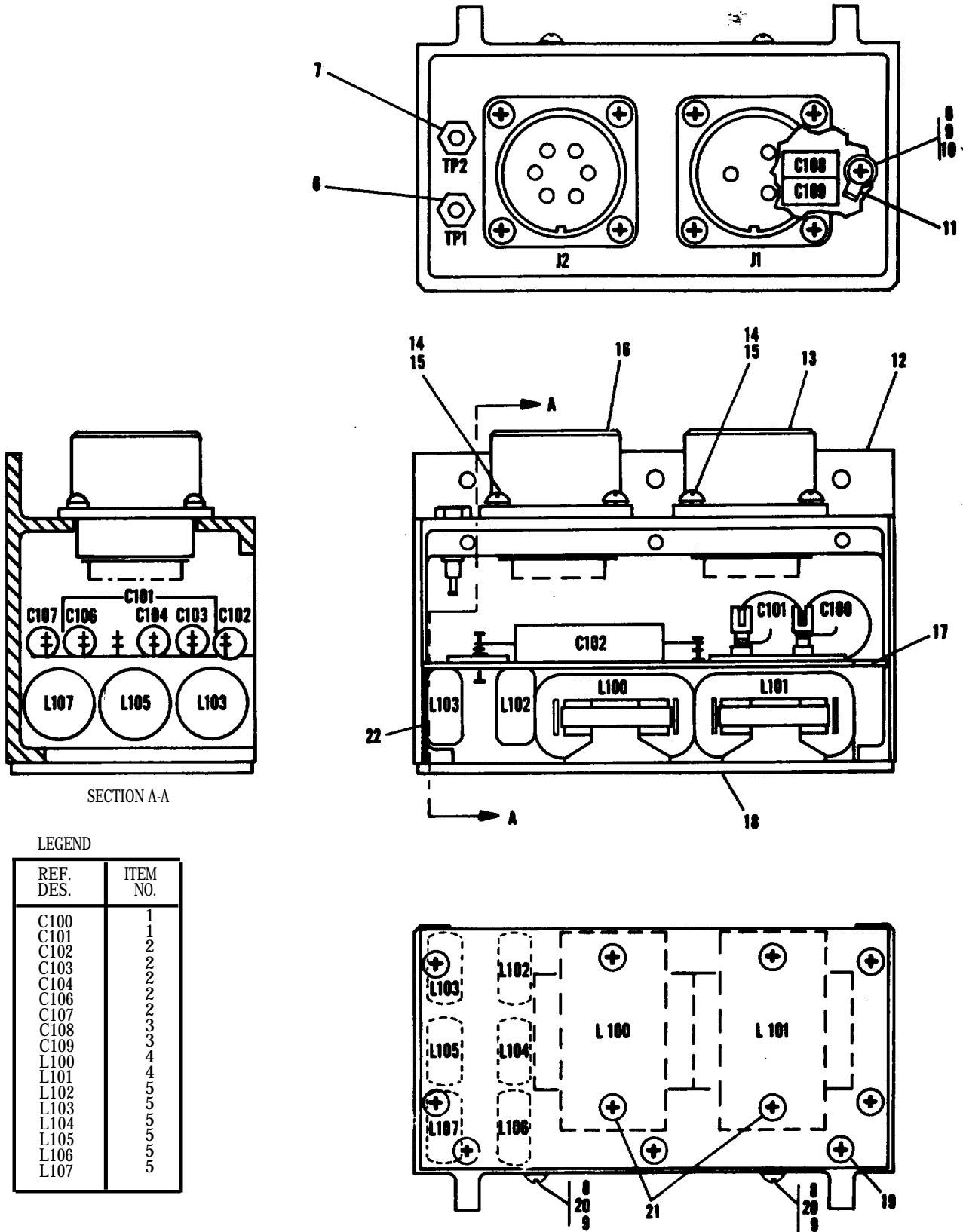


Figure 1. Inverter, Static, Power PP-7274C/A.

EL7PJ001
EL7P001

SECTION II		TM11-6125-259-30P						
(1)	(2)	(3)	(4)	(5)	(6)	(7)	(8)	
ILLUSTRATION					DESCRIPTION		QTY	
(a)	(b)	NATIONAL		PART			INC	
FIG	ITEM	STOCK	FSCM	NUMBER			IN	
NO	NO	NUMBER			USABLE ON CODE	U/M	UNIT	
NO	NO	CODE						
GROUP 00 INVERTER, STATIC, POWER PP-7274C/A								
1	1	XDFZZ		06509	424908-1	COVER	EA	1
1	2	PAFZZ	5310-00-722-5998	96906	MS15795-805	WASHER, FLAT	EA	66
1	3	PAFZZ	5305-00-054-6651	96906	MS51957-27	SCREW, MACHINE	EA	54
1	4	XDFZZ		95987	NO. 1/4-4	CLAMP, HOLE	EA	3
1	5	PAFFF	6125-01-101-9303	0509	424904-1	CIRCUIT, CARD ASSEMB	EA	1
1	6	XDFZZ		95987	NO. 3/8-4	CLAMP, CABLE	EA	3
1	7	PAFZZ	5310-00-929-6395	96906	MS35338-136	WASHER, LOCK	EA	16
1	8	PAFZZ	5305-00-054-6655	96906	MS51957-31	SCREW, MACHINE	EA	6
1	9	XDFZZ		06509	324909-1	COVER, REAR	EA	1
1	10	PAFZZ	5950-01-108-4144	06509	424932-1	TRANSFORMER, POWER	EA	1
1	11	PAFZZ	5950-01-108-4977	06509	424933-1	TRANSFORMER, POWER	EA	1
1	12	XAFZZ		06509	524598-1	HOUSING	EA	1
1	13	PAFZZ	5305-00-958-2918	96906	MS24693C26	SCREW, MACHINE	EA	8
1	14	XDFZZ		06509	324921-1	BOARD, CLAD	EA	1
1	15	XDFZZ		06509	324921-2	BOARD, UNCLAD	EA	2
1	16	PAFFF	6125-01-101-9299	06509	424916-1	CIRCUIT, CARD ASSEMB	EA	1
1	17	PAFFF	6125-01-101-9300	06509	424918-1	CIRCUIT, CARD ASSEMB	EA	1
1	18	XDFZZ		06509	324922-1	COVER, BUTTON	EA	1
1	19	PAFZZ	5305-00-763-6009	96906	MS24693C1	SCREW, MACHINE	EA	6
1	20	PAFZZ	5305-00-054-5647	96906	MS51957-13	SCREW, MACHINE	EA	6
1	21	PAFZZ	5310-00-933-8118	96906	MS35338-135	WASHER, LOCK	EA	8
1	22	PAFZZ	5310-00-595-6211	96906	MS15795-803	WASHER, FLAT	EA	8
1	23	XDFZZ		06540	5212-SS0440	STANDOFF	EA	6
1	24	PAFZZ	5310-00-208-3786	80205	NAS671C4	NUT, PLAIN, HEXAGON	EA	10
1	25	PAFZZ	5305-00-780-8454	96906	MS24693C7	SCREW, MACHINE	EA	3
1	26	PAFFF	6125-01-101-9301	06509	424902-1	CIRCUIT, CARD ASSEMB	EA	1
1	27	PAFFF	6125-01-101-9302	06509	424903-1	CIRCUIT, CARD ASSEMB	EA	1
1	28	XDFZZ		06509	324923-1	SCREEN, FRONT	EA	1
1	29	XDFZZ		06509	324924-1	ADAPTER, FAN	EA	1
1	30	PAFZZ		82877	395JH	FAN, TUBEAXIAL	EA	1
1	31	PAFZZ	5340-00-984-6629	82877	271166	CLAMP, RIM CLENCHING	EA	3
1	32	PAFZZ	5305-00-054-6654	96906	MS51957-30	SCREW, MACHINE	EA	6
1	33	XDFFF		06509	424901-1	EMI MODULE	EA	1
1	34	PAFFF	6125-01-101-9304	06509	424905-1	CIRCUIT, CARD ASSEMB	EA	1
1	35	MDFZZ		06509	327515-1	PLATE, WARRANTY	EA	1
1	36	MDFZZ		06509	324910-1	NAMEPLATE	EA	1
1	37	MDFZZ		06509	327514-1	PLATE, UNIT IDENT	EA	1



EL7PJ002

Figure 2. EMI Module A1.

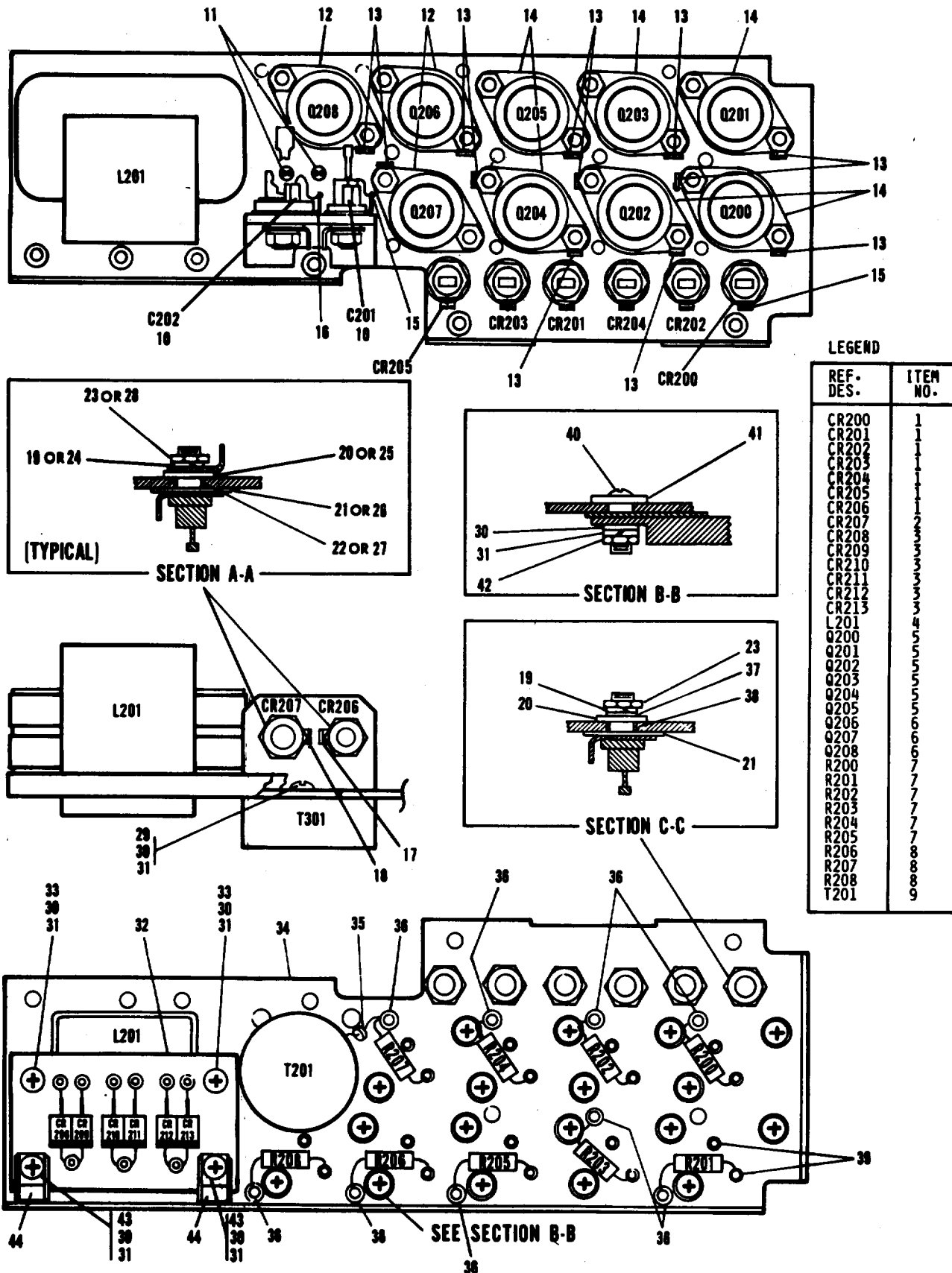


Figure 3. High Level Boost Module A2.

EL7PJ003

SECTION II		(2)	(3)	(4)	TM11-6125-259-30P	(6)	(7)	(8)
(1)	ILLUSTRATION				(5)	DESCRIPTION		QTY
FIG	(a)	SMR	NATIONAL	FSCM	PART		USABLE ON CODE	INC
NO	(b)	CODE	STOCK		NUMBER			IN
	ITEM		NUMBER					UNIT
NO	NO						U/M	
GROUP 02 HIGH LEVEL BOOST MODULE A2								
3	1	PAFZZ	5961-00-935-0138	81349	JANIN1202A	SEMICONDUCTOR DEVIC	EA	7
3	2	PAFZZ	5961-00-246-8674	81349	JANIN3910	SEMICONDUCTOR DEVIC	EA	1
3	3	PAFZZ	5961-00-372-2217	81349	JANIN5558	SEMICONDUCTOR DEVIC	EA	6
3	4	PAFZZ	5950-01-108-3846	06509	424926-1	CHOKE,RADIO FREQUEN	EA	1
3	5	PAFZZ		13327	SDT96301	TRANSISTOR	EA	6
3	6	PAFZZ	5961-00-858-8960	81349	JAN2N5038	TRANSISTOR	EA	3
3	7	PAFZZ		81349	RW79UR499F	RESISTOR, FIXED, WIRE	EA	6
3	8	XDFZZ	5905-00-997-9352	81349	RW79UIR00F	RESISTOR, FIXED, WIRE	EA	3
3	9	PAFZZ	5950-01-108-3848	06509	324927-1	TRANSFORMER, CURRENT	EA	1
3	10	PAFZZ	5910-00-010-8666	81349	M39014/01-1357	CAPACITOR, FIXED, CER	EA	2
3	11	XDFZZ		06509	SP037-1-4	INSERT, BUSHING	EA	2
3	12	PAFZZ	5970-01-028-6334	06509	SP036-1	INSULATOR, PLATE	EA	3
3	13	XDFZZ		06509	SP020-2	LUG, SOLDER	EA	12
3	14	PAFZZ	5970-00-756-4801	08289	DM123	INSULATOR, PLATE	EA	4
3	15	PAFZZ	5940-00-681-8184	96906	MS0035431-8	TERMINAL, LUG	EA	7
3	16	PAFZZ	5940-01-007-6049	86928	5413-44	TERMINAL, LUG	EA	1
3	17	PAFZZ	5940-00-259-4820	06509	SP017-3	TERMINAL, LUG	EA	1
3	18	XDFZZ		06509	SP017-4	LUG, SOLDER	EA	1
3	19	PAFZZ	5305-00-054-6656	96906	MS51957-32	WASHER, LOCK	EA	7
3	20	PAFZZ		80205	NAS549GL10	INSULATOR, WASHER	EA	7
3	21	PAFZZ	5970-01-014-3253	08289	MW-562-203-004	INSULATOR, WASHER	EA	7
3	22	XDFZZ		06509	SP037-4-6	INSERT, BUSHING	EA	1
3	23	PAFZZ	5310-00-934-9765	96906	MS35650-304	NUT, PLAIN, HEXAGON	EA	7
3	24	PAFZZ	5310-00-933-8121	96906	MS35338-139	WASHER, LOCK	EA	1
3	25	PAFZZ		80205	NAS549GL416	INSULATOR, WASHER	EA	1
3	26	PAFZZ	5970-00-959-7535	03538	7090800P001	INSULATOR, WASHER	EA	1
3	27	PAFZZ	5970-01-054-0743	06509	SP037-5-6	INSULATOR	EA	1
3	28	PAFZZ	5310-00-400-5503	96906	MS35650-3254	NUT, PLAIN, HEXAGON	EA	1
3	29	PAFZZ	5305-00-054-6651	96906	MS51957-27	SCREW, MACHINE	EA	1
3	30	PAFZZ	5310-00-722-5998	96906	MS15795-805	WASHER, FLAT	EA	23
3	31	PAFZZ	5310-00-929-6395	96906	MS35338-136	WASHER, LOCK	EA	23
3	32	XDFZZ		06509	324942-1	BOARD-TERM-DIODE	EA	1
3	33	PAFZZ	5305-00-411-0683	96906	MS51957-123	SCREW, MACHINE	EA	2
3	34	XDFZZ		06509	424902-2	BRACKET, SUPPORT	EA	1
3	35	PAFZZ	5950-00-873-5676	02114	K500100/3B	SHIELDING BEAD, ELEC	EA	1
3	36	PAFZZ	5940-00-681-0406	98291	ST-250L3	TERMINAL, STUD	EA	9
3	37	PAFZZ	5310-00-619-1148	81349	MS15795-808	WASHER, FLAT	EA	6
3	38	XDFZZ		06509	SP037-4-3	INSERT, BUSHING	EA	6
3	39	PAFZZ	5970-01-080-2588	06509	SP037-2-7	INSULATOR, BUSHING	EA	18

SECTION II		TM11-6125-259-30P						
(1)	(2)	(3)	(4)	(5)	(6)		(7)	(8)
ILLUSTRATION					DESCRIPTION			QTY
(a)	(b)	NATIONAL		PART				INC
FIG	ITEM	STOCK	FSCM	NUMBER		USABLE ON CODE	U/M	IN
NO	NO	NUMBER						UNIT
3	40	PAFZZ 5305-00-054-6654	96906	MS51957-30	SCREW, MACHINE		EA	18
3	41	XDFZZ	06509	SP024-6	WASHER, SHOULDER		EA	18
3	42	PAFZZ 5310-00-616-8660	80205	NAS671C6	NUT, PLAIN, HEXAGON		EA	18
3	43	PAFZZ 5305-00-054-6655	96906	MS51957-31	SCREW, MACHINE		EA	2
3	44	XDFZZ	95987	N0.3/16-4	CLAMP CABLE		EA	2

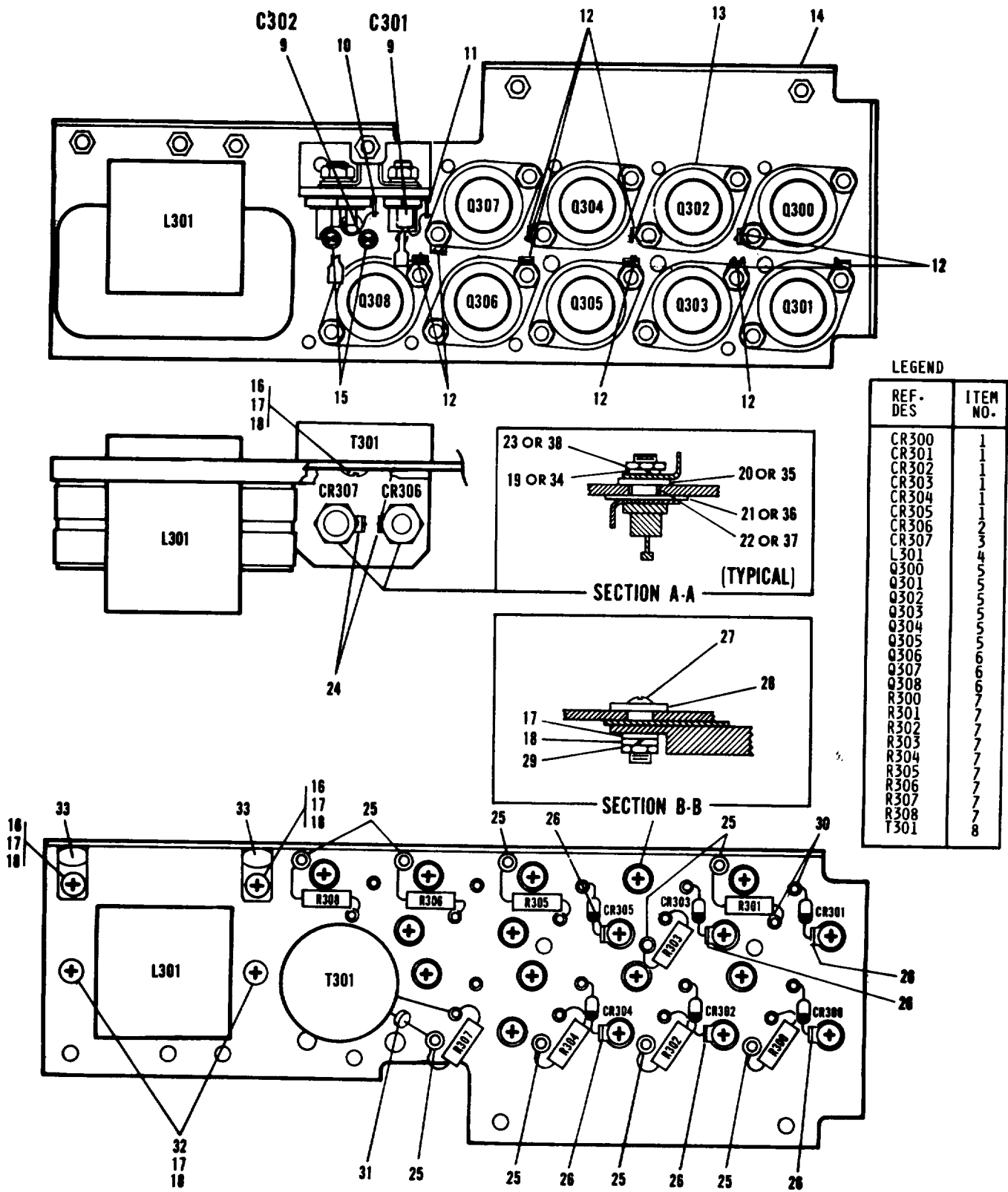


Figure 4. Low Level Boost Module A3.

EL7PJ004

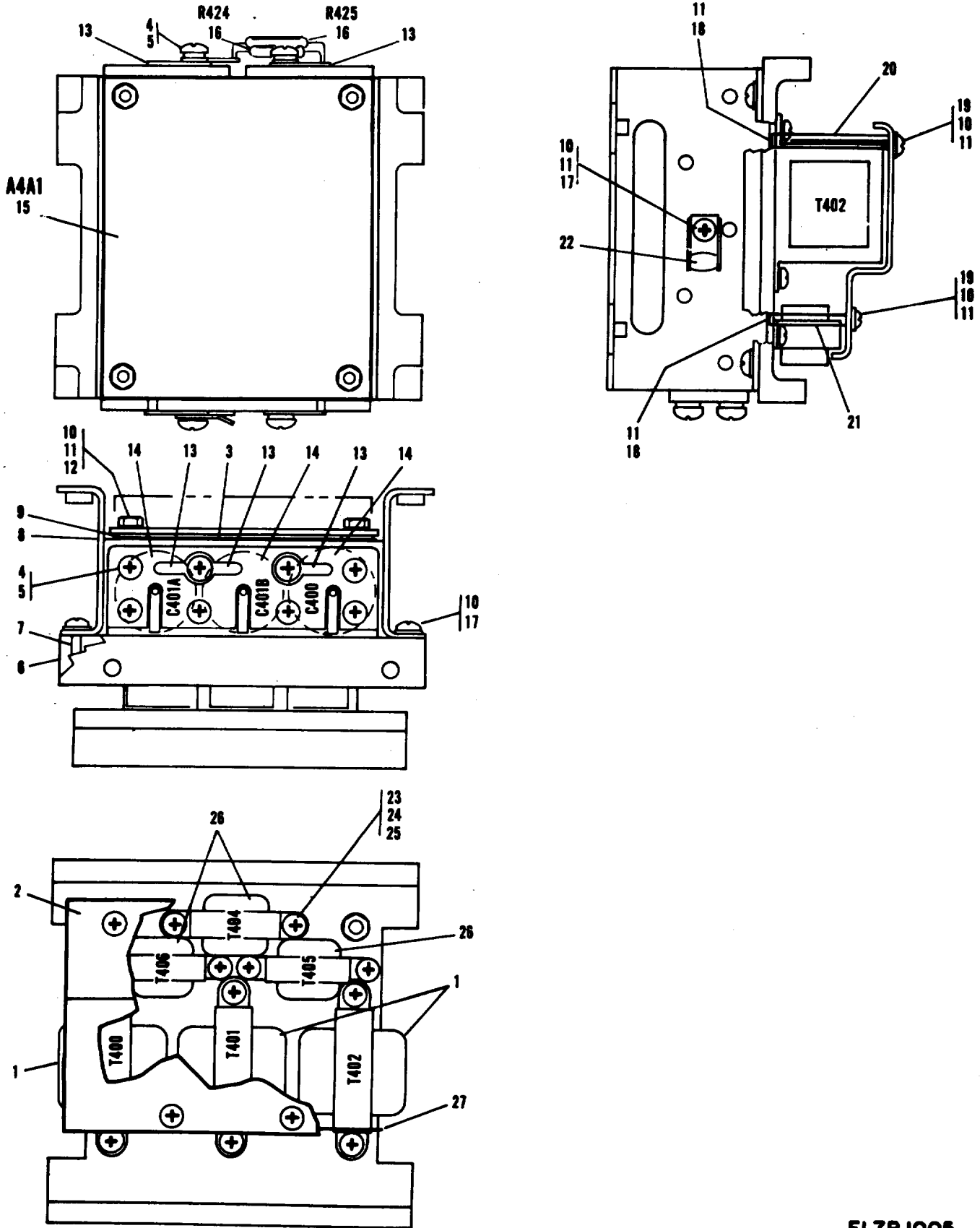
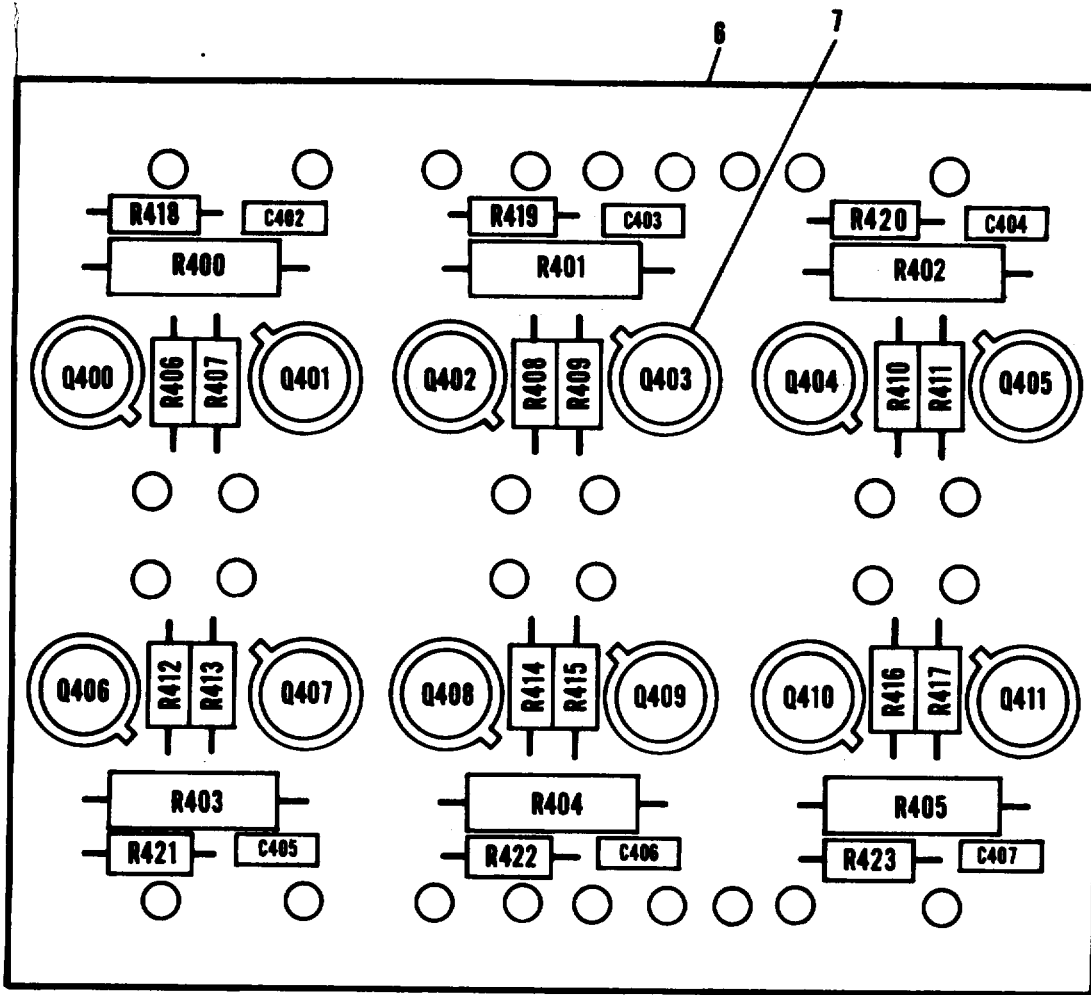


Figure 5. Power Caps and Drive Circuit A4.

EL7PJ005

EL7P005



LEGEND

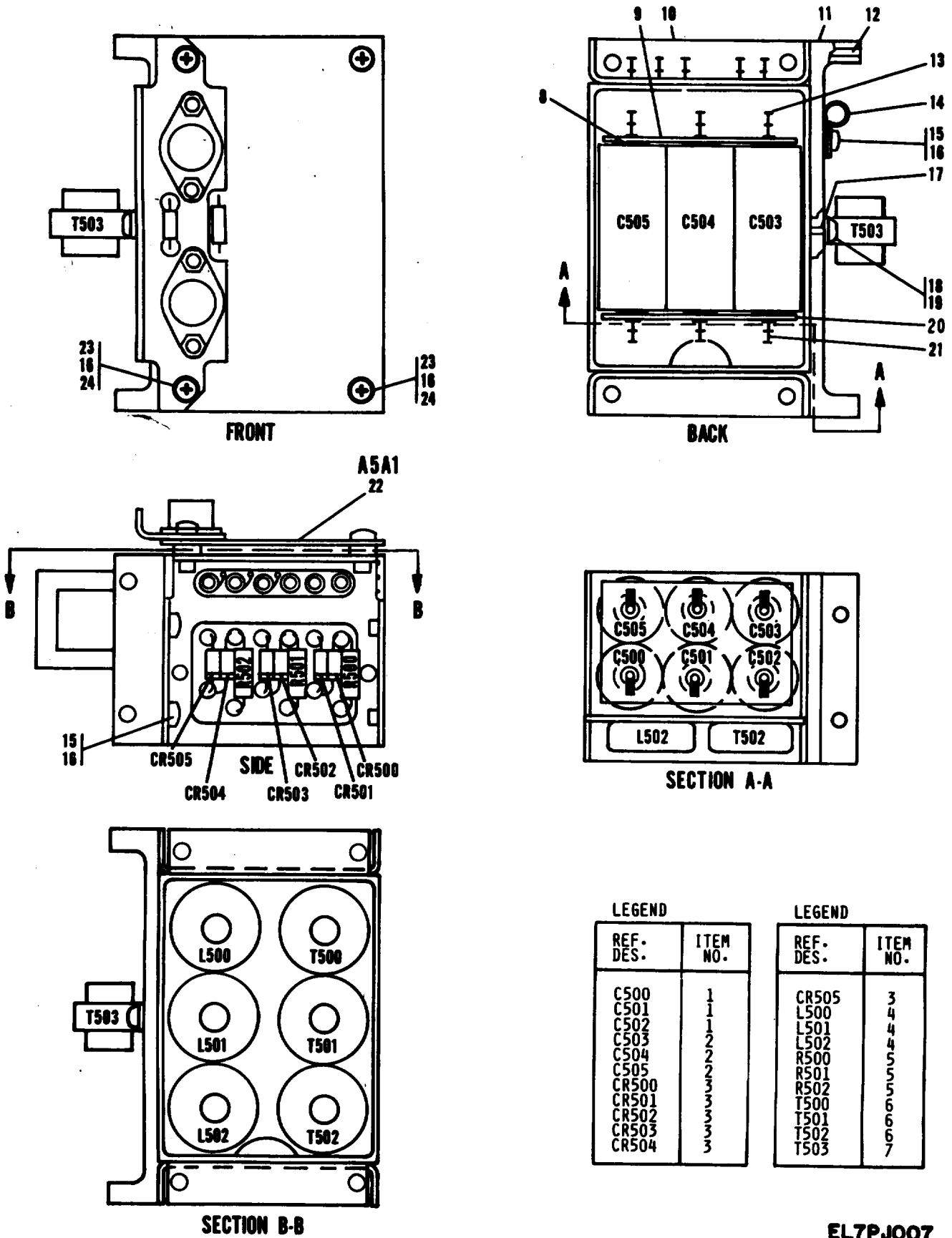
REF. DES.	ITEM NO.
C402	1
C403	1
C404	1
C405	1
C406	1
C407	1
Q400	2
Q401	2
Q402	2
Q403	2
Q404	2
Q405	2
Q406	2
Q407	2
Q408	2
Q409	2
Q410	2
Q411	2
R400	3
R401	3
R402	3

LEGEND

REF. DES.	ITEM NO.
R403	3
R404	3
R405	3
R406	4
R407	4
R408	4
R409	4
R410	4
R411	4
R412	4
R413	4
R414	4
R415	4
R416	4
R417	4
R418	5
R419	5
R420	5
R421	5
R422	5
R423	5

EL7PJ006

Figure 6. Component Assembly A4A1.



LEGEND

REF. DES.	ITEM NO.
C500	1
C501	1
C502	1
C503	2
C504	2
C505	2
CR500	3
CR501	3
CR502	3
CR503	3
CR504	3

LEGEND

REF. DES.	ITEM NO.
CR505	3
L500	4
L501	4
L502	4
R500	5
R501	5
R502	5
T500	6
T501	6
T502	6
T503	7

Figure 7. Output Filter and Bias Regulator A5

EL7PJ007

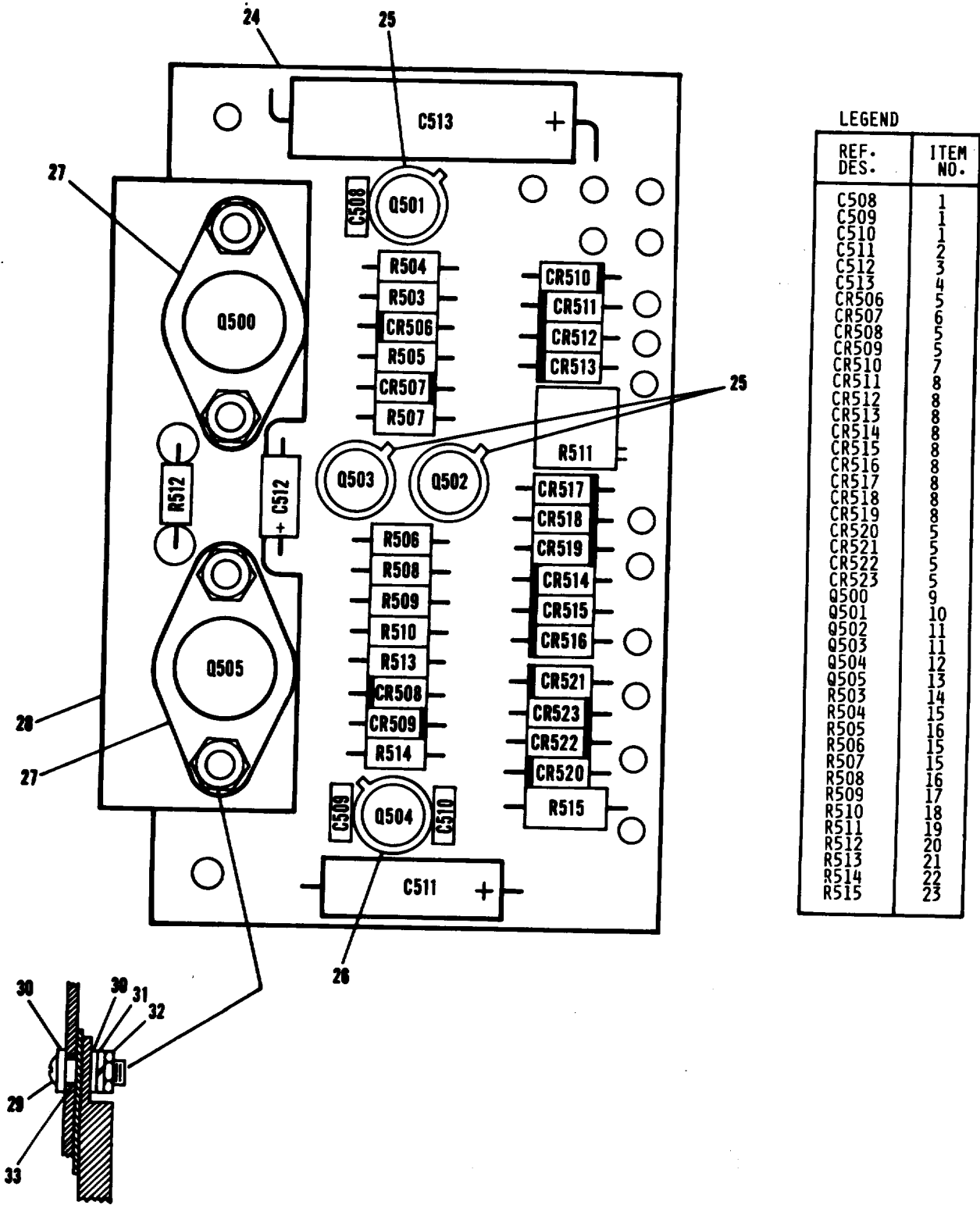
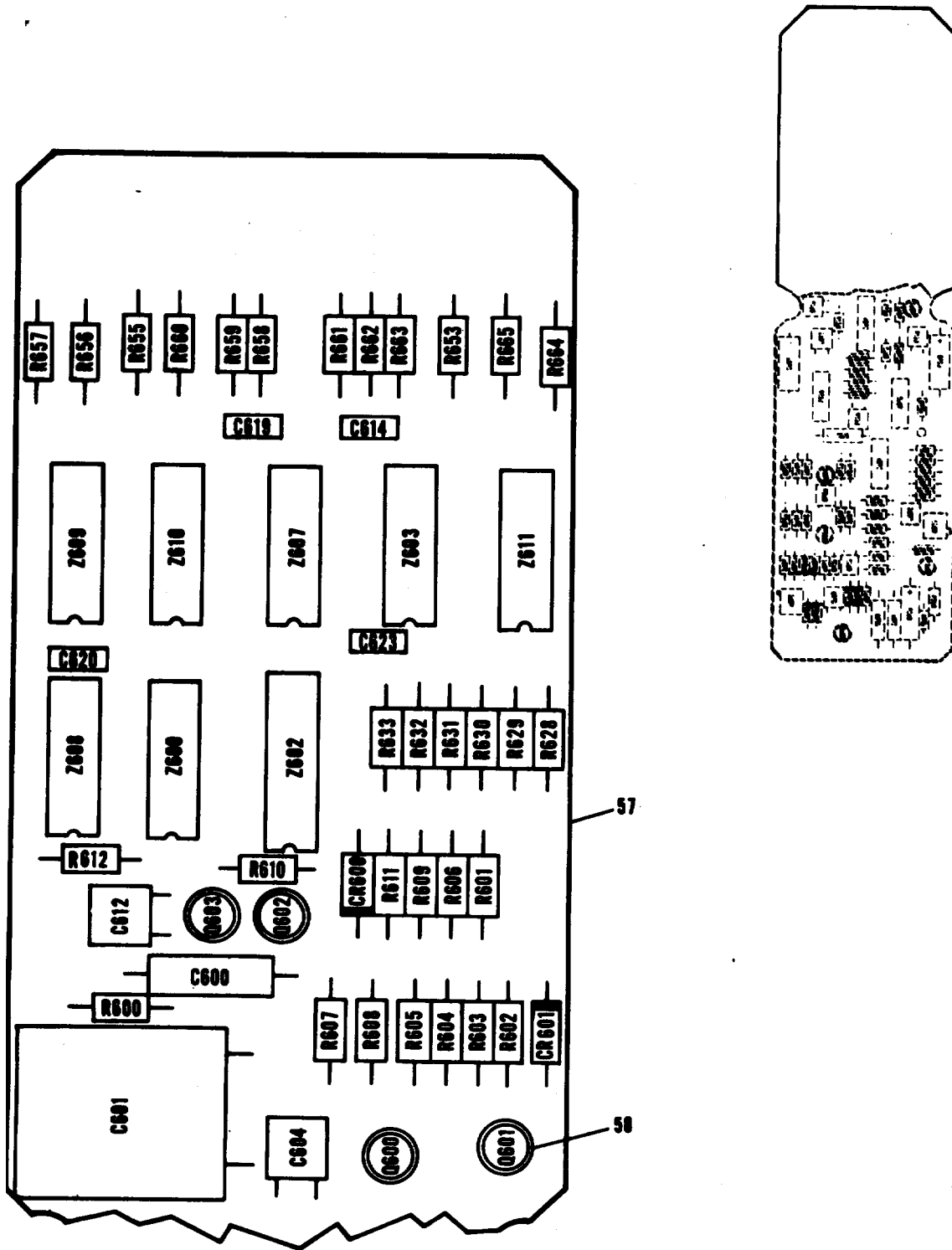


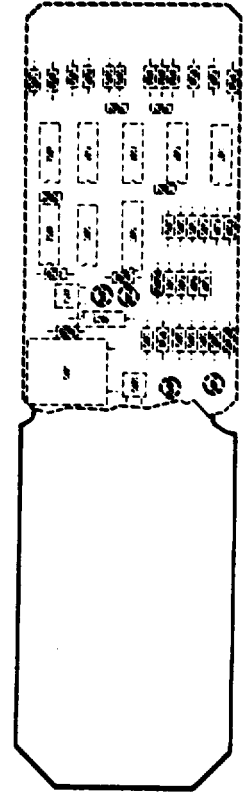
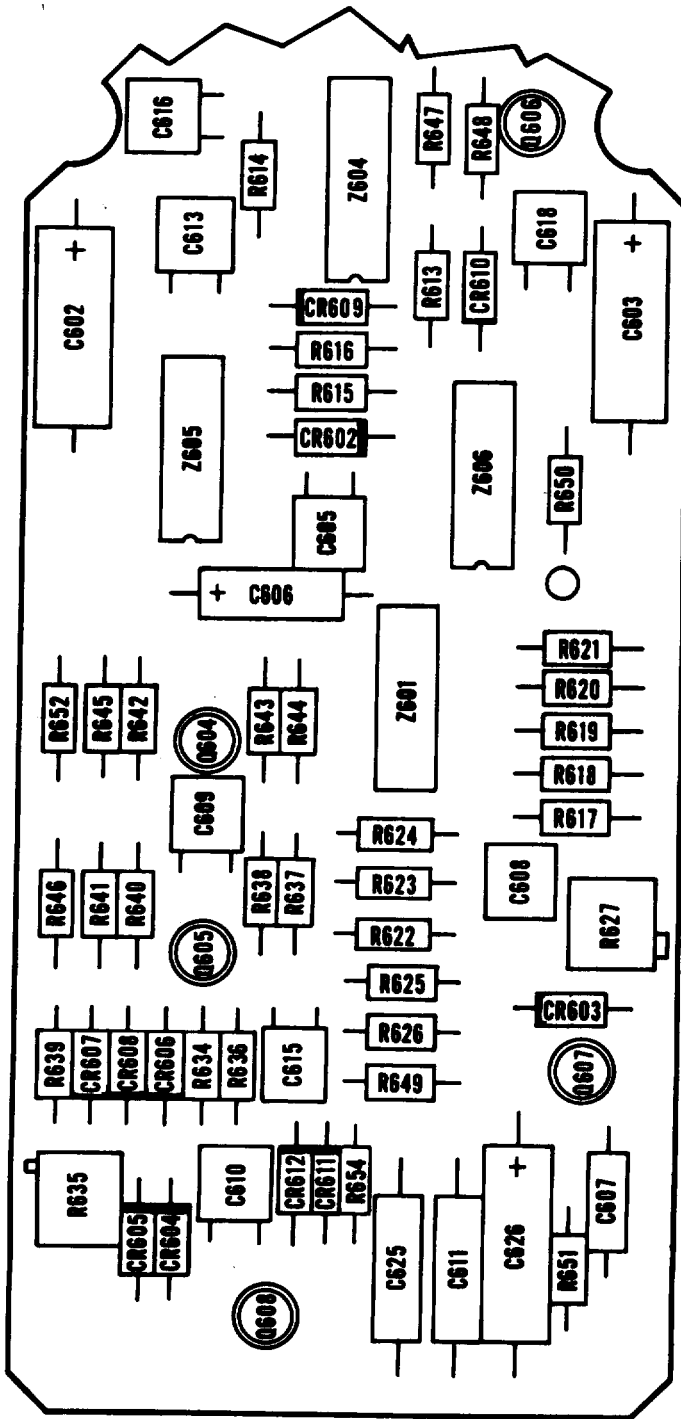
Figure 8. Component Assembly

EL7PJ008



EL7PJ009

Figure 9. Component Assembly, Logic A6 (Sheet 1 of 3).



EL7PJ010

Figure 9. Component Assembly. Logic A6 (Sheet 2 of 3).

LEGEND

REF. DES.	ITEM NO.
C600	1
C601	2
C602	3
C603	3
C604	4
C605	5
C606	6
C607	7
C608	5
C609	4
C610	5
C611	8
C612	5
C613	5
C614	5
C615	5
C616	5
C618	5
C619	5
C620	5
C623	5
C625	9
C626	10
CR600	11
CR601	12
CR602	12
CR603	13
CR604	14
CR605	14
CR606	13
CR607	12
CR608	12
CR609	12
CR610	12
CR611	12
CR612	12
Q600	15
Q601	15
Q602	16
Q603	17
Q604	18
Q605	17
Q606	18

REF. DES.	ITEM NO.
Q607	17
Q608	17
R600	19
R601	20
R602	21
R603	22
R604	23
R605	24
R606	22
R607	25
R608	25
R609	26
R610	20
R611	26
R612	27
R613	28
R614	29
R615	30
R616	31
R617	32
R618	33
R619	34
R620	35
R621	20
R622	36
R623	33
R624	32
R625	20
R626	37
R627	38
R628	36
R629	36
R630	36
R631	36
R632	36
R633	36
R634	39
R635	40
R636	41
R637	41
R638	32
R639	41
R640	42

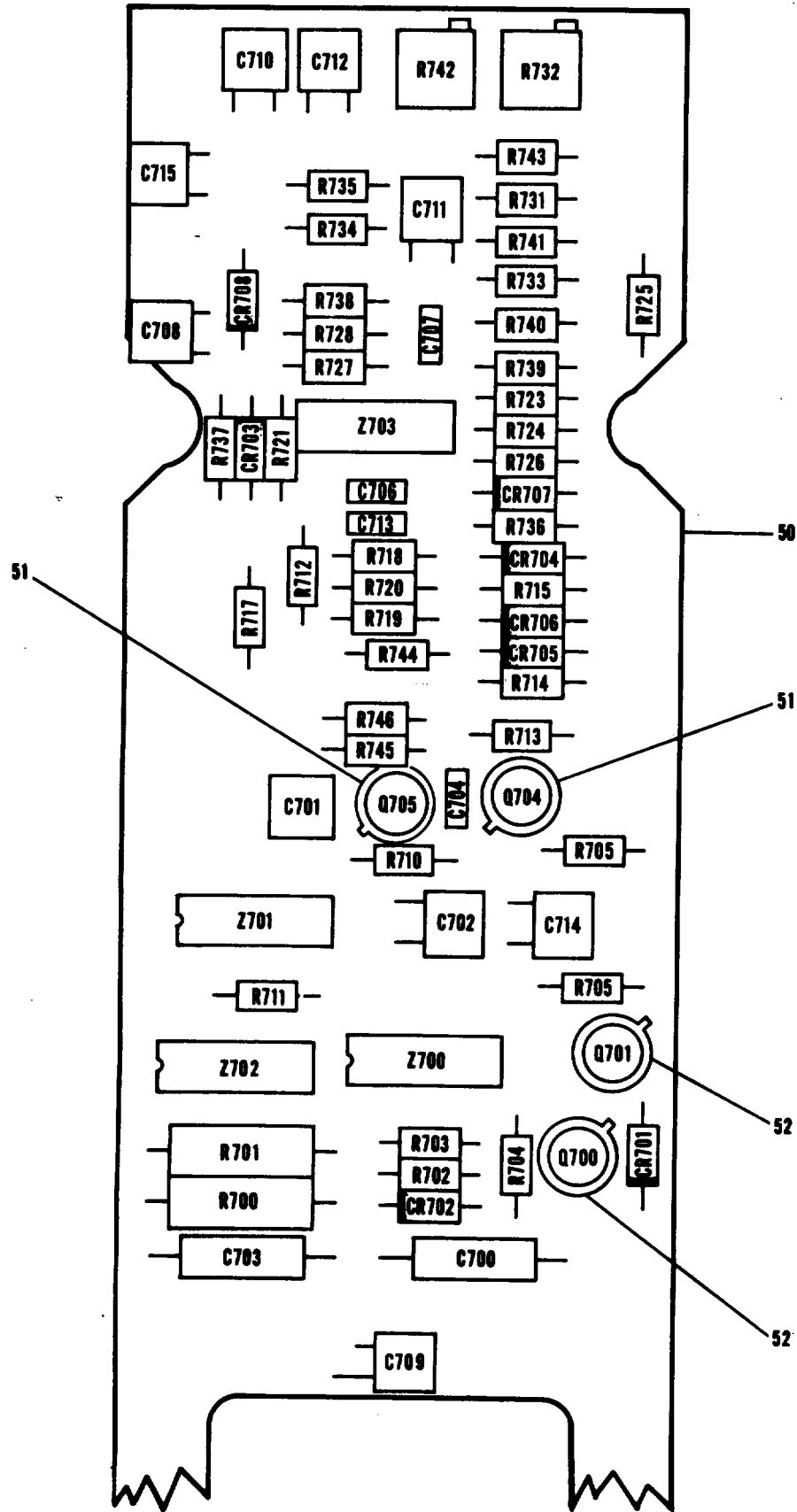
REF. DES.	ITEM NO.
R641	42
R642	41
R643	43
R644	44
R645	45
R646	35
R647	36
R648	27
R649	36
R650	46
R651	36
R652	47
R653	48
R654	41
R655	49
R656	49
R657	49
R658	49
R659	49
R660	49
R661	48
R662	48
R663	48
R664	48
R665	48
Z600	50
Z601	51
Z602	52
Z603	53
Z604	54
Z605	53
Z606	55
Z607	53
Z608	53
Z609	56
Z610	56
Z611	56

EL7PJ011

Figure 9. Component Assembly, Logic A6 (Sheet 3 of 3).

SECTION II		(2)	(3)	(4)	TM11-6125-259-30P	(6)	(7)	(8)
(1)	ILLUSTRATION				(5)	DESCRIPTION		QTY
FIG	(a)	SMR	NATIONAL	FSCM	PART		USABLE ON CODE	INC
NO	(b)	CODE	STOCK		NUMBER			IN
	ITEM		NUMBER					UNIT
NO	NO							
GROUP 06 COMPONENT ASSEMBLY, LOGIC A6								
9	1	PAFZZ	5910-00-007-2003	81349	M39003/01-3009	CAPACITOR, FIXED, ELE		EA 1
9	2	PAFZZ	5910-00-777-6919	81319	CM07FD103G03	CAPACITOR, FIXED, MIC		EA 1
9	3	PAFZZ	5910-00-010-8240	81349	M39003/01-2969	CAPACITOR, FIXED, ELE		EA 2
9	4	PAFZZ	5910-00-124-0659	81349	M39014/01-1575	CAPACITOR, FIXED, CER		EA 2
9	5	PAFZZ	5910-00-113-5499	81349	M39014/02-1350	CAPACITOR, FIXED, CER		EA 12
9	6	PAFZZ		81349	M39003/06-0019	CAPACITOR, FIXED ELE		EA 1
9	7	PAFZZ	5910-00-495-0042	81349	M39003/01-3076	CAPACITOR, FIXED, ELE		EA 1
9	8	PAFZZ	5910-00-192-7180	81349	M39003/01-2979	CAPACITOR, FIXED, ELE		EA 1
9	9	PAFZZ	5910-00-144-4381	81349	M39003/01-3024	CAPACITOR, FIXED, ELE		EA 1
9	10	PAFZZ	5910-00-253-5213	81349	M39003/01-2263	CAPACITOR, FIXED, ELE		EA 1
9	11	PAFZZ	5961-00-846-9157	81349	JAN1N759A	SEMICONDUCTOR DEVIC		EA 1
9	12	PAFZZ	5961-00-490-0151	81319	JAN1N4938	SEMICONDUCTOR DEVIC		EA 8
9	13	PAFZZ	5961-00-081-6103	81319	JAN1N823	SEMICONDUCTOR DEVIC		EA 2
9	14	PAFZZ	5961-00-087-6047	81319	JAN1N645	SEMICONDUCTOR DEVIC		EA 2
9	15	PAFZZ	5961-00-226-8579	81319	JAN2N930	TRANSISTOR		EA 2
9	16	PAFZZ	5961-00-932-9318	81319	JAN2N2605	TRANSISTOR		EA 1
9	17	PAFZZ	5961-00-951-8757	81319	JAN2N2222A	TRANSISTOR		EA 4
9	18	PAFZZ	5961-00-925-3777	81319	JAN2N2907A	TRANSISTOR		EA 2
9	19	PAFZZ	5905-00-114-0710	81319	RCR07G331JS	RESISTOR, FIXED, COMP		EA 1
9	20	PAFZZ	5905-00-223-2741	81319	RNC55H1002FS	RESISTOR, FIXED, FILM		EA 4
9	21	PAFZZ	5905-00-982-0927	81319	RN55C2002F	RESISTOR, FIXED, FILM		EA 1
9	22	PAFZZ	5905-00-153-0135	81319	RNC55H1212FS	RESISTOR, FIXED, FILM		EA 2
9	23	PAFZZ	5905-00-138-7530	81319	RNC55H4020FS	RESISTOR, FIXED, FILM		EA 1
9	24	PAFZZ	5905-00-982-0196	81319	RN55C5621F	RESISTOR, FIXED, FILM		EA 1
9	25	PAFZZ	5905-00-982-0192	81319	RN55C8252F	RESISTOR, FIXED, FILM	SELECT AT TEST	EA 1
9	25	PAFZZ		81319	RN55C8452F	RESISTOR, FIXED, FILM	SELECT AT TEST	EA 1
9	25	PAFZZ	5905-00-432-0336	81319	RNC55H8662FS	RESISTOR, FIXED, FILM	SELECT AT TEST	EA 1
9	25	PAFZZ	5905-00-138-7530	81319	RNC55H4020FS	RESISTOR, FIXED, FILM	SELECT AT TEST	EA 1
9	25	PAFZZ	5905-00-936-7549	81319	RN55C4120F	RESISTOR, FIXED, FILM	SELECT AT TEST	EA 1
9	25	PAFZZ	5905-00-005-2903	81349	RNC55H4420FS	RESISTOR, FIXED, FILM	SELECT AT TEST	EA 1
9	25	PAFZZ		81349	RN55C4320F	RESISTOR, FIXED, FILM	SELECT AT TEST	EA 1
9	25	PAFZZ		81319	RN55C4420F	RESISTOR, FIXED, FILM	SELECT AT TEST	EA 1
9	25	PAFZZ		81349	RN55C4530F	RESISTOR, FIXED, FILM	SELECT AT TEST	EA 1
9	25	PAFZZ		81349	RN55C4640F	RESISTOR, FIXED, FILM	SELECT AT TEST	EA 1
9	25	PAFZZ	5905-00-982-0209	81349	RN55C4750F	RESISTOR, FIXED, FILM	SELECT AT TEST	EA 1
9	25	PAFZZ	5905-00-138-7531	81349	RNC55H4870FS	RESISTOR, FIXED, FILM	SELECT AT TEST	EA 1
9	26	PAFZZ	5905-00-964-0395	81349	RN55C2741F	RESISTOR, FIXED, FILM		EA 2
9	27	PAFZZ	5905-00-105-7764	81349	RCR07G222JS	RESISTOR, FIXED, COMP		EA 2
9	28	PAFZZ	5905-00-468-5815	81349	RNC55H1692FS	RESISTOR, FIXED, FILM		EA 1

SECTION II		TM11-6125-259-30P							
(1)	(2)	(3)	(4)	(5)	(6)		(7)	(8)	
ILLUSTRATION					DESCRIPTION			QTY	
(a)	(b)	NATIONAL		PART		USABLE ON CODE	U/M	INC	
FIG	ITEM	STOCK	FSCM	NUMBER				IN	
NO	NO	NUMBER						UNIT	
9	29	PAFZZ 5905-00-137-4817	81349	RNC55H2492FS	RESISTOR, FIXED, FILM		EA	1	
9	30	PAFZZ 5905-00-135-6046	81349	RCR07G681JS	RESISTOR, FIXED, COMP		EA	1	
9	31	PAFZZ 5905-00-008-6886	81349	RNC55H1543FS	RESISTOR, FIXED, FILM		EA	1	
9	32	PAFZZ 5905-00-106-1356	81349	RCR07G152JS	RESISTOR, FIXED, COMP		EA	3	
9	33	PAFZZ 5905-00-401-7432	81349	RNC55H1003FS	RESISTOR		EA	2	
9	34	PAFZZ 5905-00-982-0930	81349	RN55C5111F	RESISTOR, FIXED, FILM		EA	1	
9	35	PAFZZ	81349	RN55C4021F	RESISTOR, FIXED, FILM		EA	2	
9	36	PAFZZ 5905-00-114-0711	81349	RCR07G472JS	RESISTOR, FIXED, COMP		EA	9	
9	37	PAFZZ 5905-00-104-8368	81349	RCR07G470JS	RESISTOR, FIXED, COMP		EA	1	
9	38	PAFZZ 5905-00-998-9178	81349	RT24C2P202	RESISTOR, VARIABLE, W		EA	1	
9	39	PAFZZ 5905-00-104-8358	81349	RCR07G822JS	RESISTOR, FIXED, COMP		EA	1	
9	40	PAFZZ 5905-01-016-0032	81349	RT24C2P502	RESISTOR, VARIABLE, W		EA	1	
9	41	PAFZZ 5905-00-110-7620	81349	RCR07G102JS	RESISTOR, FIXED, COMP		EA	5	
9	42	PAFZZ 5905-00-126-6683	81349	RCR07G332JS	RESISTOR, FIXED, COMP		EA	2	
9	43	PAFZZ 5905-00-111-4727	81349	RCR07G272JS	RESISTOR, FIXED, COMP		EA	1	
9	44	PAFZZ 5905-00-136-3890	81349	RCR07G513JS	RESISTOR, FIXED, COMP		EA	1	
9	45	PAFZZ 5905-00-432-0331	81349	RNC55H8661FS	RESISTOR, FIXED, FILM		EA	1	
9	46	PAFZZ 5905-00-141-0743	81349	RCR07G392JS	RESISTOR, FIXED, COMP		EA	1	
9	47	PAFZZ 5905-00-485-4545	81349	RCR07G334JS	RESISTOR, FIXED, COMP		EA	1	
9	48	PAFZZ 5905-00-141-0742	81349	RCR07G181JS	RESISTOR, FIXED, COMP		EA	6	
9	49	PAFZZ 5905-00-141-1183	81349	RCR07G101JS	RESOSTOR, FIXED, COMP		EA	6	
9	50	PAFZZ 5962-01-077-0796	81349	DM5492J/883B	MICROCIRCUIT, DIGITA		EA	1	
9	51	PAFZZ 5962-01-003-2572	27014	LM139D/883B	MICROCIRCUIT, LINEAR		EA	1	
9	52	XDFZZ	06509	722780	INTEGRATED CIRCUIT		EA	1	
9	53	PAFZZ 5962-00-318-2223	81349	M38510/00104BCB	MICROCIRCUIT, DIGITA		EA	4	
9	54	PAFZZ 5962-00-336-7474	01295	SNC54123J	MICROCIRCUIT, DIGITA		EA	1	
9	55	PAFZZ 5962-01-061-4210	18324	SE555F/883B	MICROCIRCUIT, LINEAR		EA	1	
9	56	PAFZZ 5962-00-348-2590	01295	SNC54H05J	MICROCIRCUIT, DIGITA		EA	3	
9	57	XAFZZ	06509	424917-1	PRINTED WIRING BD		EA	1	
9	58	XDFZZ	06509	SP052	INSULATOR PAD		EA	9	



LEGEND

REF. DES.	ITEM NO.
C700	1
C701	2
C702	2
C703	3
C704	4
C705	5
C706	6
C707	7
C708	2
C709	2
C710	2
C711	2
C712	8
C713	6
C714	2
C715	8
C716	8
C717	9
CR701	9
CR702	9
CR703	10
CR704	11
CR705	11
CR706	11
CR707	12
CR708	13
CR709	14
CR710	14
Q700	14
Q701	15
Q702	15
Q703	15
Q704	15
Q705	16
R700	16
R701	16
R702	17
R703	17
R704	18
R705	18
R706	18
R707	19
R708	20
R709	20
R710	20
R711	18
R712	21
R713	21
R714	21
R715	22
R716	23
R717	24
R718	25
R719	26
R720	27
R721	28
R722	29
R723	29
R724	30
R725	31
R726	32
R727	33
R728	34
R729	35
R730	36
R731	37
R732	37
R733	38
R734	39
R735	23
R736	40
R737	41
R738	42
R739	43
R740	35
R741	44
R742	45
R743	31
R744	20
R745	46
R746	47
Z700	48
Z701	49
Z702	49
Z703	49

EL7PJ012

Figure 10. Component Assembly, Boost Regulator A7.

NATIONAL STOCK NUMBER AND PART NUMBER INDEX

STOCK NUMBER	FIGURE NO.	ITEM NO.	STOCK NUMBER	FIGURE NO.	ITEM NO.
5905-00-005-2680	10	44	5905-00-138-7530	9	23
5905-00-005-2903	9	25	5905-00-138-7530	9	25
5910-00-007-2003	9	1	5905-00-138-7531	9	25
5910-00-007-2003	10	1	5905-00-139-1925	10	36
5970-00-008-3294	5	9	5905-00-141-0742	9	48
5970-00-008-3294	7	8	5905-00-141-0743	9	46
5905-00-008-6886	9	31	5905-00-141-1183	9	49
5910-00-010-8240	9	3	5910-00-142-2563	8	4
5910-00-010-8666	3	10	5910-00-144-4381	9	9
5910-00-010-8666	4	9	5910-00-144-4381	10	3
5305-00-054-5646	5	24	5905-00-153-0135	9	22
5305-00-054-5646	7	18	5962-00-160-5028	10	48
5305-00-054-5647	1	20	5961-00-192-5942	6	2
5305-00-054-5648	2	14	5961-00-192-5942	10	14
5305-00-054-5648	7	23	5910-00-192-7180	9	8
5305-00-054-5649	8	29	5310-00-208-3786	1	24
5305-00-054-6650	4	32	5905-00-223-2741	9	20
5305-00-054-6650	5	17	5305-00-225-6400	2	21
5305-00-054-6650	7	15	5961-00-226-5134	10	13
5305-00-054-6651	3	29	5905-00-233-4531	8	21
5305-00-054-6651	4	16	5961-00-241-3456	8	11
5305-00-054-6652	2	8	5961-00-246-8674	3	2
5305-00-054-6652	5	19	5961-00-246-8674	4	2
5305-00-054-6654	1	32	5910-00-253-5213	8	2
5305-00-054-6654	3	40	5910-00-253-5213	9	10
5305-00-054-6654	4	27	5940-00-259-4820	3	17
5305-00-054-6655	1	8	5962-00-264-4806	10	46
5305-00-054-6655	3	43	5962-00-318-2223	9	53
5305-00-054-6656	3	19	5962-00-318-2223	10	47
5305-00-054-6656	4	19	5962-00-336-7474	9	54
5305-00-054-6666	5	4	5962-00-348-2590	9	56
5305-00-066-7326	2	19	5935-00-351-3760	2	6
5905-00-079-6336	8	19	5961-00-372-2217	3	3
5961-00-081-6103	8	6	5910-00-400-4526	10	8
5961-00-081-6103	9	13	5310-00-400-5503	3	28
5961-00-081-6103	10	12	5310-00-400-5503	4	38
5961-00-087-6047	8	8	5935-00-400-9567	2	13
5961-00-087-6047	9	14	5905-00-401-7432	9	33
5905-00-104-8358	9	39	5905-00-401-8688	8	22
5905-00-104-8368	9	37	5961-00-404-9136	8	7
5905-00-104-8371	10	24	5961-00-404-9136	10	9
5905-00-105-7764	8	15	5305-00-411-0683	3	33
5905-00-105-7764	9	27	5905-00-419-2829	10	22
5905-00-106-1356	9	32	5905-00-422-3848	7	5
5905-00-106-1357	10	33	5905-00-422-4802	10	43
5905-00-106-3666	10	31	5905-00-432-0331	9	45
5905-00-110-0388	8	14	5905-00-432-0336	9	25
5905-00-110-0993	8	23	5905-00-452-0714	10	37
5905-00-110-7620	8	16	5905-00-452-0723	8	17
5905-00-110-7620	9	41	5905-00-465-0333	10	25
5905-00-110-7620	10	20	5905-00-468-5815	9	28
5905-00-111-4727	9	43	5961-00-481-4205	4	5
5905-00-111-4845	6	5	5905-00-485-4545	9	47
5910-00-113-5445	10	6	5905-00-485-4545	10	32
5910-00-113-5499	9	5	5961-00-490-0151	7	3
5910-00-113-5499	10	2	5961-00-490-0151	8	5
5910-00-113-5499	10	7	5961-00-490-0151	9	12
5905-00-114-0710	9	19	5961-00-490-0151	10	11
5905-00-114-0710	10	19	5910-00-495-0042	8	3
5905-00-114-0711	9	36	5910-00-495-0042	9	7
5905-00-114-0711	10	27	5310-00-595-6211	1	22
5905-00-114-5343	6	4	5310-00-595-6211	2	15
5905-00-114-5343	10	26	5310-00-595-6211	5	25
5905-00-114-5344	10	21	5310-00-595-6211	7	19
5905-00-119-8811	10	17	5310-00-595-6211	8	30
5905-00-120-9154	8	20	5310-00-616-8660	2	10
5905-00-120-9154	10	18	5310-00-616-8660	3	42
5905-00-121-9919	10	40	5310-00-616-8660	4	29
5910-00-124-0659	6	1	5310-00-616-8660	5	12
5910-00-124-0659	8	1	5310-00-619-1148	3	37
5910-00-124-0659	9	4	5940-00-681-0406	3	36
5910-00-124-0659	10	4	5940-00-681-0406	4	25
5905-00-126-6683	9	42	5940-00-681-8184	3	15
5905-00-126-6683	10	23	5940-00-681-8184	4	11
5905-00-131-1255	10	39	5310-00-722-5998	1	2
5905-00-135-6046	9	30	5310-00-722-5998	2	20
5905-00-136-3890	9	44	5310-00-722-5998	3	30
5905-00-137-4817	9	29	5310-00-722-5998	4	17
5905-00-138-3376	10	28	5310-00-722-5998	5	10

STOCK NUMBER	FIGURE NO.	ITEM NO.	STOCK NUMBER	FIGURE NO.	ITEM NO.
5310-00-722-5998	7	16	5905-00-982-0196	8	18
5970-00-756-4801	3	14	5905-00-982-0196	9	24
5305-00-763-6009	1	19	5905-00-982-0196	10	41
5910-00-777-6919	9	2	5905-00-982-0209	9	25
5305-00-780-8454	1	25	5905-00-982-0927	9	21
5935-00-802-3789	2	16	5905-00-982-0927	10	45
5961-00-846-9157	9	11	5905-00-982-0930	9	34
5961-00-858-8960	3	6	5340-00-984-6629	1	31
5961-00-858-8960	4	6	5340-00-995-6333	5	22
5950-00-873-5676	3	35	5340-00-995-6333	7	14
5950-00-873-5676	4	31	5905-00-997-9352	3	8
5905-00-903-8458	6	3	5905-00-997-9352	4	7
5905-00-904-8504	10	29	5905-00-998-9178	9	38
5905-00-905-3330	5	16	5961-00-998-9324	8	10
5961-00-924-6981	4	1	5962-01-003-2572	9	51
5961-00-925-3777	9	18	5962-01-003-2572	10	49
5999-00-929-3715	6	7	5940-01-007-6049	3	16
5999-00-929-3715	10	52	5940-01-007-6049	4	10
5310-00-929-6395	1	7	5970-01-014-3253	3	21
5310-00-929-6395	2	9	5970-01-014-3253	4	21
5310-00-929-6395	3	31	5905-01-016-0032	9	40
5310-00-929-6395	4	18	5905-01-016-0032	10	35
5310-00-929-6395	5	11	5970-01-028-6334	3	12
5961-00-932-9318	9	16	5970-01-028-6334	4	13
5310-00-933-8118	1	21	5970-01-028-6381	8	27
5310-00-933-8118	7	24	5940-01-028-8637	4	26
5310-00-933-8118	8	31	5961-01-048-0460	10	10
5310-00-933-8119	5	5	5970-01-054-0743	3	27
5310-00-933-8121	3	24	5970-01-054-0743	4	37
5310-00-933-8121	4	34	5962-01-061-4210	9	55
5310-00-934-9748	8	32	5962-01-077-0796	9	50
5310-00-934-9765	3	23	5970-01-080-2588	3	39
5310-00-934-9765	4	23	5970-01-080-2588	4	30
5961-00-935-0138	3	1	6125-01-101-9299	1	16
5961-00-935-0138	4	3	6125-01-101-9300	1	17
5905-00-936-7549	9	25	6125-01-101-9301	1	26
5961-00-951-8757	8	12	6125-01-101-9302	1	27
5961-00-951-8757	9	17	6125-01-101-9303	1	5
5961-00-951-8757	10	15	6125-01-101-9304	1	34
5305-00-958-2918	1	13	5950-01-108-3846	3	4
5305-00-958-2918	5	18	5950-01-108-3848	3	9
5970-00-959-7535	3	26	5950-01-108-3848	4	8
5970-00-959-7535	4	36	5950-01-108-4144	1	10
5905-00-964-0395	9	26	5950-01-108-4869	4	4
5905-00-975-1653	10	42	5950-01-108-4894	7	7
5905-00-982-0192	9	25	5950-01-108-4977	1	11

FSCM	PART NUMBER	FIGURE NO.	ITEM NO.	FSCM	PART NUMBER	FIGURE NO.	ITEM NO.
81349	CK06BX474K	10	8	81349	JAN1N937B	10	13
81349	CK16BX335M	2	3	81349	JAN2N2222A	8	12
81349	CM07FD103G03	9	2	81349	JAN2N2222A	9	17
16299	CYK01BT222F	10	5	81349	JAN2N2222A	10	15
08289	DM123	3	14	81349	JAN2N2605	9	16
27014	DM5492J/883B	9	50	81349	JAN2N2907A	9	18
12517	E12B505KXC	2	1	81349	JAN2N3019	8	11
12517	E12D205KXC	7	2	81349	JAN2N3421	6	2
12517	E12D224KXC	2	2	81349	JAN2N3421	10	14
12517	E12E105KXC	7	1	81349	JAN2N3635	8	10
81349	JAN1N1202A	3	1	81349	JAN2N5038	3	6
81349	JAN1N1202A	4	3	81349	JAN2N5038	4	6
81349	JAN1N3910	3	2	81349	JAN2N930	9	15
81349	JAN1N3910	4	2	02114	K500100/3B	3	35
81349	JAN1N4245	4	1	02114	K500100/3B	4	31
81349	JAN1N4938	7	3	27014	LM139D/883B	9	51
81349	JAN1N4938	8	5	27014	LM139D/883B	10	49
81349	JAN1N4938	9	12	96906	MS0035431-8	3	15
81349	JAN1N4938	10	11	96906	MS0035431-8	4	11
81349	JAN1N5314	10	10	96906	MS15795-803	1	22
81349	JAN1N5558	3	3	96906	MS15795-803	2	15
81349	JAN1N5615	8	7	96906	MS15795-803	5	25
81349	JAN1N5615	10	9	96906	MS15795-803	7	19
81349	JAN1N645	8	8	96906	MS15795-803	8	30
81349	JAN1N645	9	14	96906	MS15795-805	1	2
81349	JAN1N759A	9	11	96906	MS15795-805	2	20
81349	JAN1N823	8	6	96906	MS15795-805	3	30
81349	JAN1N823	9	13	96906	MS15795-805	4	17
81349	JAN1N823	10	12	96906	MS15795-805	5	10

FSCM	PART NUMBER	FIGURE NO.	ITEM NO.	FSCM	PART NUMBER	FIGURE NO.	ITEM NO.
96906	MS15795-805	7	16	80205	NAS1397P3	5	22
81349	MS15795-808	3	37	80205	NAS1397P3	7	14
96906	MS21209C0415	5	23	80205	NAS549GL10	3	20
96906	MS21209C0415	7	17	80205	NAS549GL10	4	20
96906	MS21209C0610	5	7	80205	NAS549GL416	3	25
96906	MS21209C0610	7	12	80205	NAS549GL416	4	35
96906	MS24693C1	1	19	80205	NAS549G6	5	9
96906	MS24693C24	2	19	80205	NAS549G6	7	8
96906	MS24693C26	1	13	80205	NAS671C4	1	24
96906	MS24693C26	5	18	80205	NAS671C6	2	10
96906	MS24693C3	2	21	80205	NAS671C6	3	42
96906	MS24693C7	1	25	80205	NAS671C6	4	29
96906	MS3102R22-5S	2	16	80205	NAS671C6	5	12
96906	MS3102R22-6P	2	13	95987	N0.1/4-4	1	4
96906	MS35338-135	1	21	95987	N0.3/16-4	3	44
96906	MS35338-135	7	24	95987	N0.3/16-4	4	33
96906	MS35338-135	8	31	95987	N0.3/8-4	1	6
96906	MS35338-136	1	7	81349	RCR07G101JS	9	49
96906	MS35338-136	2	9	81349	RCR07G102JS	8	16
96906	MS35338-136	3	31	81349	RCR07G102JS	9	41
96906	MS35338-136	4	18	81349	RCR07G102JS	10	20
96906	MS35338-136	5	11	81349	RCR07G103JS	10	31
96906	MS35338-137	5	5	81349	RCR07G104JS	8	14
96906	MS35338-139	3	24	81349	RCR07G106JS	10	40
96906	MS35338-139	4	34	81349	RCR07G122JS	10	39
96906	MS35649-244	8	32	81349	RCR07G151JS	10	17
96906	MS35650-304	3	23	81349	RCR07G152JS	9	32
96906	MS35650-304	4	23	81349	RCR07G181JS	9	48
96906	MS35650-3254	3	28	81349	RCR07G182JS	6	4
96906	MS35650-3254	4	38	81349	RCR07G182JS	10	26
96906	MS51957-12	5	24	81349	RCR07G184JS	10	21
96906	MS51957-12	7	18	81349	RCR07G201JS	6	5
96906	MS51957-123	3	33	81349	RCR07G222JS	8	15
96906	MS51957-13	1	20	81349	RCR07G222JS	9	27
96906	MS51957-14	2	14	81349	RCR07G272JS	9	43
96906	MS51957-14	7	23	81349	RCR07G275JS	10	24
96906	MS51957-15	8	29	81349	RCR07G331JS	9	19
96906	MS51957-26	4	32	81349	RCR07G331JS	10	19
96906	MS51957-26	5	17	81349	RCR07G332JS	9	42
96906	MS51957-26	7	15	81349	RCR07G332JS	10	23
96906	MS51957-27	1	3	81349	RCR07G334JS	9	47
96906	MS51957-27	3	29	81349	RCR07G334JS	10	32
96906	MS51957-27	4	16	81349	RCR07G392JS	9	46
96906	MS51957-28	2	8	81349	RCR07G470JS	9	37
96906	MS51957-28	5	19	81349	RCR07G471JS	8	20
96906	MS51957-30	1	32	81349	RCR07G471JS	10	18
96906	MS51957-30	3	40	81349	RCR07G472JS	9	36
96906	MS51957-30	4	27	81349	RCR07G472JS	10	27
96906	MS51957-31	1	8	81349	RCR07G513JS	9	44
96906	MS51957-31	3	43	81349	RCR07G563JS	10	33
96906	MS51957-32	3	19	81349	RCR07G565JS	10	25
96906	MS51957-32	4	19	81349	RCR07G681JS	9	30
96906	MS51957-41	5	4	81349	RCR07G822JS	9	39
08289	MW-562-203-004	3	21	81349	RCR20G123JS	8	23
08289	MW-562-203-004	4	21	81349	RNC55H1001FS	10	28
81349	M38510/00104BCB	9	53	81349	RNC55H1002FS	9	20
81349	M38510/00104BCB	10	47	81349	RNC55H1003FS	9	33
81349	M38510/02306BCB	10	46	81349	RNC55H1212FS	9	22
81349	M39003/01-2263	8	2	81349	RNC55H1272FS	10	44
81349	M39003/01-2263	9	10	81349	RNC55H1403FS	10	22
81349	M39003/01-2969	9	3	81349	RNC55H1541FS	8	21
81349	M39003/01-2979	9	8	81349	RNC55H1543FS	9	31
81349	M39003/01-3009	9	1	81349	RNC55H1692FS	9	28
81349	M39003/01-3009	10	1	81349	RNC55H2492FS	9	29
81349	M39003/01-3024	9	9	81349	RNC55H3481FS	10	43
81349	M39003/01-3024	10	3	81349	RNC55H4020FS	9	23
81349	M39003/01-3076	8	3	81349	RNC55H4020FS	9	25
81349	M39003/01-3076	9	7	81349	RNC55H4220FS	9	25
81349	M39003/06-0019	9	6	81349	RNC55H4870FS	9	25
81349	M39014/01-1339	10	6	81349	RNC55H5901FS	10	37
81349	M39014/01-1357	3	10	81349	RNC55H6491FS	10	36
81349	M39014/01-1357	4	9	81349	RNC55H7871FS	8	17
81349	M39014/01-1575	6	1	81349	RNC55H8250FS	8	22
81349	M39014/01-1575	8	1	81349	RNC55H8661FS	9	45
81349	M39014/01-1575	9	4	81349	RNC55H8662FS	9	25
81349	M39014/01-1575	10	4	81349	RN55C1962F	10	34
81349	M39014/02-1350	9	5	81349	RN55C2002F	9	21
81349	M39014/02-1350	10	2	81349	RN55C2002F	10	45
81349	M39014/02-1350	10	7	81349	RN55C2741F	9	26
81349	M39018/01-0627	8	4	81349	RN55C3161F	10	42

FSCM	PART NUMBER	FIGURE NO.	ITEM NO.	FSCM	PART NUMBER	FIGURE NO.	ITEM NO.
81349	RN55C3832F	10	29	83330	1505-103	2	7
81349	RN55C4021F	9	35	02735	2N5671	4	5
81349	RN55C4120F	9	25	81349	2N6261	8	9
81349	RN55C4320F	9	25	82877	271166	1	31
81349	RN55C4420F	9	25	06509	321763-1	7	4
81349	RN55C4530F	9	25	06509	324909-1	1	9
81349	RN55C4640F	9	25	06509	324910-1	1	36
81349	RN55C4750F	9	25	06509	324912-1	5	15
81349	RN55C5111F	9	34	06509	324913-1	6	6
81349	RN55C5112F	10	30	06509	324914-1	7	22
81349	RN55C5621F	8	18	06509	324915-1	8	24
81349	RN55C5621F	9	24	06509	324920-1	8	28
81349	RN55C5621F	10	41	06509	324921-1	1	14
81349	RN55C6982F	10	38	06509	324921-2	1	15
81349	RN55C8252F	9	25	06509	324922-1	1	18
81349	RN55C8452F	9	25	06509	324923-1	1	28
81349	RT24C2P102	8	19	06509	324924-1	1	29
81349	RT24C2P202	9	38	06509	324925-1	5	3
81349	RT24C2P502	9	40	06509	324927-1	3	9
81349	RT24C2P502	10	35	06509	324927-1	4	8
81349	RWR89S1001FR	7	5	06509	324934-1	2	5
81349	RW79UR499F	3	7	06509	324936-1	7	6
81349	RW79U1R00F	3	8	06509	324940-1	5	2
81349	RW79U1R00F	4	7	06509	324942-1	3	32
81349	RW79U2000F	5	16	06509	327514-1	1	37
81349	RW79U2490F	10	16	06509	327515-1	1	35
81349	RW79U3R01F	6	3	82877	395JH	1	30
13327	SDT96301	3	5	06509	424599-1	2	12
18324	SE555F/883B	9	55	06509	424901-1	1	33
01295	SNC54H05J	9	56	06509	424901-3	2	18
01295	SNC54123J	9	54	06509	424901-9	2	17
01295	SNC5473J	10	48	06509	424902-1	1	26
06509	SP007-7	7	13	06509	424902-2	3	34
06509	SP007-7	7	21	06509	424902-3	4	14
06509	SP017-2	5	13	06509	424903-1	1	27
06509	SP017-3	3	17	06509	424904-1	1	5
06509	SP017-4	3	18	06509	424904-2	5	8
06509	SP017-4	4	24	06509	424904-7	5	6
06509	SP018-2	4	26	06509	424905-1	1	34
06509	SP020-2	2	11	06509	424905-2	7	10
06509	SP020-2	3	13	06509	424905-5	7	9
06509	SP020-2	4	12	06509	424905-6	7	20
06509	SP024-6	3	41	06509	424905-7	7	11
06509	SP024-6	4	28	06509	424908-1	1	1
06509	SP036-1	3	12	06509	424916-1	1	16
06509	SP036-1	4	13	06509	424917-1	9	57
06509	SP037-1-3	8	33	06509	424918-1	1	17
06509	SP037-1-4	3	11	06509	424919-1	10	50
06509	SP037-1-4	4	15	06509	424926-1	3	4
06509	SP037-2-7	3	39	06509	424926-2	4	4
06509	SP037-2-7	4	30	06509	424928-1	2	4
06509	SP037-4-3	3	38	06509	424929-1	7	7
06509	SP037-4-6	3	22	06509	424930-1	5	26
06509	SP037-4-6	4	22	06509	424931-1	5	1
06509	SP037-5-6	3	27	06509	424932-1	1	10
06509	SP037-5-6	4	37	06509	424933-1	1	11
06509	SP039	8	26	06509	524598-1	1	12
06509	SP040-1	6	7	86928	5413-44	3	16
06509	SP040-1	10	52	86928	5413-44	4	10
06509	SP041	8	25	03538	7090800P001	3	26
06509	SP048-112B24	5	27	03538	7090800P001	4	36
06509	SP048-76C24	2	22	06509	713334	8	13
06509	SP052	9	58	06509	722780	9	52
06509	SP052	10	51	72825	76RED	2	6
06509	SP053	8	27	06540	8212-SS0440	1	23
98291	ST-250L3	3	36	06540	8218-SS-632	5	21
98291	ST-250L3	4	25	06540	8223-SS-632	5	20
14655	UHH2300-40	5	14				

RECOMMENDED CHANGES TO EQUIPMENT TECHNICAL PUBLICATIONS



THEN... JOT DOWN THE DOPE ABOUT IT ON THIS FORM. CAREFULLY TEAR IT OUT. FOLD IT AND DROP IT IN THE MAIL!

SOMETHING WRONG WITH THIS PUBLICATION?

FROM (PRINT YOUR UNIT'S COMPLETE ADDRESS)

Commander
Stateside Army Depot
ATTN: AMSTA-US
Stateside, N.J. 07703

DATE SENT 10 July 1975

PUBLICATION NUMBER
TM 11-5840-340-12

PUBLICATION DATE
23 Jan 74

PUBLICATION TITLE
Radar Set AN/PRC-76

BE EXACT. PIN-POINT WHERE IT IS

PAGE NO	PARA-GRAPH	FIGURE NO	TABLE NO
2-25	2-28		
3-10	3-3		3-1
5-6	5-8		

IN THIS SPACE TELL WHAT IS WRONG AND WHAT SHOULD BE DONE ABOUT IT:

Recommend that the installation antenna alignment procedure be changed throughout to specify a 2° IFF antenna lag rather than 1°.

REASON: Experience has shown that with only a 1° lag, the antenna servo system is too sensitive to wind gusting in excess of 25 knots, and has a tendency to rapidly accelerate and decelerate as it hunts, causing strain to the drive train. Hunting is minimized by adjusting the lag to 2° without degradation of operation.

Item 5, Function column. Change "2 db" to "3db."

REASON: The adjustment procedure the the TRANS POWER FAULT indicator calls for a 3 db (500 watts) adjustment to light the TRANS POWER FAULT indicator.

Add new step f.1 to read, "Replace cover plate removed at step e.1, above."

REASON: To replace the cover plate.

Zone C 3. On J1-2, change "+24 VDC to "+5 VDC."

REASON: This is the output line of the 5 VDC power supply. +24 VDC is the input voltage.

PRINTED NAME, GRADE OR TITLE, AND TELEPHONE NUMBER
SSG I. M. DeSpirito 999-1776

SIGN HERE
SSG I. M. DeSpirito

TEAR ALONG PERFORATED LINE

FILL IN YOUR
UNIT'S ADDRESS

FOLD BACK

DEPARTMENT OF THE ARMY

OFFICIAL BUSINESS
PENALTY FOR PRIVATE USE \$300

POSTAGE AND FEES PAID
DEPARTMENT OF THE ARMY
DOD 314



TEAR ALONG PERFORATED LINE

Commander
US Army Communications-
Electronics Command
ATTN: DRSEL-ME-MQ
Fort Monmouth, New Jersey 07703

FILL IN YOUR
UNIT'S ADDRESS

FOLD BACK

DEPARTMENT OF THE ARMY

OFFICIAL BUSINESS
PENALTY FOR PRIVATE USE \$300

POSTAGE AND FEES PAID
DEPARTMENT OF THE ARMY
DOD 314



TEAR ALONG PERFORATED LINE

Commander
US Army Communications-
Electronics Command
ATTN: DRSEL-ME-MQ
Fort Monmouth, New Jersey 07703

RECOMMENDED CHANGES TO EQUIPMENT TECHNICAL PUBLICATIONS



SOMETHING WRONG WITH THIS PUBLICATION?

THEN...JOT DOWN THE DOPE ABOUT IT ON THIS FORM. CAREFULLY TEAR IT OUT, FOLD IT AND DROP IT IN THE MAIL.

FROM: (PRINT YOUR UNIT'S COMPLETE ADDRESS)

DATE SENT

PUBLICATION NUMBER
TM 11-6125-259-30P

PUBLICATION DATE
7 MAY 1982

PUBLICATION TITLE Inverter, Static,
Power PP-7274C/A

BE EXACT PIN-POINT WHERE IT IS

PAGE NO.	PARA-GRAPH	FIGURE NO.	TABLE NO.

IN THIS SPACE TELL WHAT IS WRONG AND WHAT SHOULD BE DONE ABOUT IT:

TEAR ALONG PERFORATED LINE

PRINTED NAME GRADE OR TITLE AND TELEPHONE NUMBER

SIGN HERE

FILL IN YOUR
UNIT'S ADDRESS

FOLD BACK

DEPARTMENT OF THE ARMY

OFFICIAL BUSINESS
PENALTY FOR PRIVATE USE \$300

POSTAGE AND FEES PAID
DEPARTMENT OF THE ARMY
DOD 314



TEAR ALONG PERFORATED LINE

Commander
US Army Communications-
Electronics Command
ATTN: DRSEL-ME-MQ
Fort Monmouth, New Jersey 07703

RECOMMENDED CHANGES TO EQUIPMENT TECHNICAL PUBLICATIONS



THEN...JOT DOWN THE DOPE ABOUT IT ON THIS FORM. CAREFULLY TEAR IT OUT, FOLD IT AND DROP IT IN THE MAIL.

SOMETHING WRONG WITH THIS PUBLICATION?

FROM: (PRINT YOUR UNIT'S COMPLETE ADDRESS)

DATE SENT

PUBLICATION NUMBER

TM 11-6125-259-30P

PUBLICATION DATE

7 MAY 1982

PUBLICATION TITLE Inverter, Static,

Power PP-7274C/A

BE EXACT PIN-POINT WHERE IT IS

PAGE NO.

PARA-GRAPH

FIGURE NO.

TABLE NO.

IN THIS SPACE TELL WHAT IS WRONG AND WHAT SHOULD BE DONE ABOUT IT:

TEAR ALONG PERFORATED LINE

PRINTED NAME GRADE OR TITLE AND TELEPHONE NUMBER

SIGN HERE

DA FORM 2028-2
1 JUL 79

PREVIOUS EDITIONS ARE OBSOLETE

P.S.-IF YOUR OUTFIT WANTS TO KNOW ABOUT YOUR RECOMMENDATION MAKE A CARBON COPY OF THIS AND GIVE IT TO YOUR HEADQUARTERS.

FILL IN YOUR
UNIT'S ADDRESS

FOLD BACK

DEPARTMENT OF THE ARMY

OFFICIAL BUSINESS
PENALTY FOR PRIVATE USE \$300

POSTAGE AND FEES PAID
DEPARTMENT OF THE ARMY
DOD 314



Commander
US Army Communications-
Electronics Command
ATTN: DRSEL-ME-MQ
Fort Monmouth, New Jersey 07703